



Sept 12, 1942

WELCOME TO TOPAZ

GREETINGS

Welcomed by a clap of thunder, a sudden shower, a gorgeous rainbow, Mr. and Mrs. Charles F. Ernst, director of the Central Utah Relocation Project and his administrative staff, 214 eager volunteers arrived at Delta, Utah, early Friday morning, September 11. This group was the advance contingent to Topaz, soon to be the fifth largest city in Utah.

Immediately upon arrival placements were made and crews set to work in the hospital, kitchen, employment and transportation corps. Camp Topaz, named after the high mountain west of the project and situated 16 miles west of Delta, hummed with activity even before the last volunteer was given his quarters.

The first mass-meeting between the residents and the administrative personnel was held at 7:30 that evening at the community hall with Dr. Carl Hirota presiding.

Rev. Taro Goto, in his invocation dedicated "this center to the glory of almighty God and to the uplifting of His Kingdom."

During for the first time under one roof Christians and Buddhists held the first joint religious service of Topaz Sunday morning.

This Central Utah Relocation Project has been dedicated by the leader of the advance contingent - Reverend Taro Goto - to the Glory of God. In that spirit we welcome every man, woman and child who comes to help us fulfill through Divine Guidance whatever Destiny lies before us.

We are not the first to establish a collective home in this great hospitable State of Utah. We can obtain much encouragement from the success which has been gained in spite of hardships of every description by the early pioneers of this State.

You will find that the various agencies of the United States Government have been mindful both of your material needs and of those opportunities which you desire in the fields of religion, employment, education, health and recreation.

You will be shown every respect as befits the dignity and importance which belongs to every human being. You will in turn be expected to join your best efforts to those of your fellow residents in the common objective of developing our community to the greatest degree possible.

The adjustments will be many and difficult. With God's help and blessing we can have faith and hope for the future.

Charles F. Ernst
Project Director

Topaz is more than just an engineering marvel. It is more than just an isolated settlement for evacuees. It is the sum total of dreams, deep thinking, courage, and faith. It is a living personality. Topaz is born of the great Mother America.

We are again the pioneers, blazing the road into the wilderness of our social frontiers. Not that we alone march but that we follow the ever guiding pillar of the divine wisdom and light - it is our strength.

When the first contingent arrived here after the long journey from the western shore, we were welcomed personally by Mr. and Mrs. Ernst, the project director and his wife. We knew then that we were in a big, warm family. Let us do our uttermost in making this Center a bit of His Kingdom on earth.

Rev. Taro Goto

FIRST DAY

The advance contingent eased into Delta station at 7:40 A. M. after a sleepless night. Married a day before leaving Tanforan, Mr. and Mrs. Hiroshi Takayama, non Toyo May Sasaki, made their first home in Topaz. Opening at 11 o'clock in the morning, the hospital staff went immediately to work, treating five minor cases. The kitchen crew served the first meal in Topaz at 1:30 P. M. According to the Gallup Poll, it was a mighty good lunch, and plenty of it. Every one was housed temporarily by 10:55 A. M. By the next day nearly every volunteer was assigned work. Baggage was efficiently handled and distributed long before dinner.

WHERE TO GO

BLOCK MANAGER'S OFFICE... Block 3, Bldg. 7, Apt. A. Rev. Taro Goto is temporarily acting as block manager for the advance contingent. He has generously consented to extend his services to all new residents entering our burgeoning metropolis.

Also in the same room are located the INFORMATION BUREAU, LOST and FOUND, SAFETY COUNCIL and MAIL DISTRIBUTION.

CANTEEN... Block 4, Bldg. 12, Apt. B-E. You may find what you need, be it cigarettes or writing tablets, at the city mart. Conducted on a rebate system, canteen patrons are requested to keep their receipts.

HOSPITAL... Block Four, Laundry, dry room. A few coats are ready for any emergency that might arise as new residents arrive from day to day. Doctors and nurses will be on duty constantly.

TOPAZ OUR CITY

Topaz, our new home, situated on a lake bottom 4,000 feet above sea level, is surrounded on all four sides by mountains. To the west of us stands beautiful Mt. Topaz, whence the name; to the north and east, Drum Mountains, so-called because at night mysterious drum-like noises emanate from them. Long-raging Mt. Hinokley lies to the south of Camp Topaz. Temperature varies from 20 degrees below zero to 120 degrees. In one day a difference of 50 degrees is not rare.

Topaz will consist of 42 city blocks when completed, 32 blocks being used for living quarters. In an area one mile square will be housed approximately 9,000 residents. This city will be the fifth largest in Utah.

A hospital large enough to handle 100 patients at one time is now being rushed to completion. When finished it will be one of the largest for a city of 10,000.

In the center of the city will be built a civic center consisting of a high school, auditorium, gymnasium, stores and other buildings.

The walls of the apartments are made with shot-rock and the floors covered with masonite. Though still incomplete, ceilings and inside walls will soon be installed after carpenters arrive from Tanforan. Because of this residents are requested to refrain from building shelves and fixtures on the unfinished walls.

Women will be pleased to find that four bathtubs have been provided for their use in each block. Men must be content with showers only. There are individual basins in both wash rooms. Last but not least, flush toilets have been installed.

Approximately 300 to 350 persons will be housed in one block. A block consists of three buildings, a dining hall, lavatory and laundry; and a community hall, or recreation hall. There are six rooms to a building arranged in the following manner—A, B, C, D, E, F. A family of two to four will occupy the end rooms, A-E; four to five in C-D; and five to six in B-E.

IRRIGATION

Irrigation water for our farms will come from the G. V. ...

THE STAFF

Working furiously day and night, several volunteers offered their full time and energy to publish this the first issue of the city of Topaz. They are: Kim Obata, Fumio Obayashi, Fred Hoshiyama, Tad Hirotsu, Rev. Goto, Lily Tamaki, and Henri Takahashi.

They were limited to material and time. This issue was mimeographed in Delta.

APPENDECTOMY

Mrs. Miyo Miura is now convalescing at the Delta hospital after an appendectomy last Sunday afternoon. She will soon be back in Camp Topaz, according to Dr. Ben Kondo, resident physician.

WORDS

You are now in Topaz, Utah. Here we say Dining Hall and not Mess Hall; Safety Council, not Internal Police; Residents, not Evacuees; and last but not least, Mental Climate, not Morale.

SECRET

★ ADMINISTRATIVE STAFF ★
Of
CENTRAL UTAH RELOCATION PROJECT

Director
 Assistant Director
 Chief, Public Works Division
 Head, Irrigation and Conservation Section
 Head, Construction Section
 Chief, Agricultural Division
 Head, Agricultural Production Section
 Chief, Community Services Division
 Head, Education Section
 Head, Community Welfare Section
 Chief, Internal Security
 Chief, Community Enterprises
 Chief, Project Reports Division
 Chief, Fire Protection Division
 Chief, Administrative Division
 Head, Procurement Section
 Head, Property Control & Warehouse Section
 Head, Budget & Finance Section
 Head, Office Services Section (mails & files)
 Chief, Employment & Housing Division
 Head, Quarters Section
 Head, Placement Section
 Head, Occupational Coding & Records Section
 Chief, Transportation & Supply Division
 Head, Motor Pool Section
 Head, Mess Management Section
 Chief, Maintenance & Operations Division
 Head, Garage Section
 Head, Bldgs. & Grounds Maintenance & Repair Section
 Chief, Medical Officer

ERNST, Charles F.
 HUGHES, James F.
 NOFTZGER, Lee J.
 WATSON, Henry R.
 HUTCHINSON, Malford M.
 BELL, Roscoe
 FARRELL, Wm. C.
 BELL, Lorne W.
 CARLISLE, Dr. John
 LAFABREQUE, George
 FRIDLEY, Ralph B.
 HONDRICK, Walter W.
 HULL, Irvin
 OWEN, Samuel V.
 NIESSÉ, Gilbert L.
 HUNTER, Wm.
 SCOOPMIRE, K. W.
 BURNHAM, Leon
 ALTVATER, Adrian H.
 CORNWALL, Claude C.
 EATON, Arthur
 JENNINGS, James M.
 unnamed
 POTTER, Roy
 ROGERS, Carl
 WATSON, Brandon
 BAKER, Paul H.
 TAYLOR, Kenley
 TAYLOR, Lawrence B.
 RAMSEY, W. S. M.D.

HAND BAGGAGES

All hand baggage placed in the back of the buses may be retrieved outside the medical station after the medical examinations are over, it was announced.

SCRAP LUMBER

Sufficient scrap lumber has been assured all residents of Camp Topaz. A Committee has been temporarily organized to supervise the distribution of lumber.

SCHOOL TO OPEN

Elementary and high schools will open on Oct. 19, it was announced recently. Day nurseries will probably begin before the grade schools.

Dr. John P. Carlisle, Ph.D. from University of California, and one of the most outstanding men in Education in Utah, will supervise the schools.

All interested in teaching should report on Oct. 1 when a teachers' training institute will begin. The place will be announced soon.

A rough estimate of 400,000 board feet of lumber is now available, ever increasing with the day so all residents are requested to refrain from hindering the progress of the carpenters according to the committee in charge of the distribution of scrap lumber.

Latecomers to Camp Topaz may rest assured that they will receive their equal share of scrap lumber when they arrive. Block managers will arrange to get lumber for residents. Since sufficient wood is available, there will be no necessity for hoarding or nocturnal commando raids.

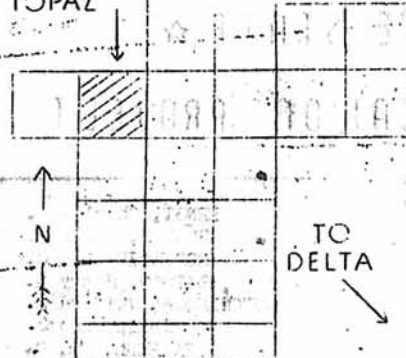
EXTINGUISHERS OUR WATER

Fire extinguishers found in apartments and public buildings are for the use of the residents. Your block firemen will call and give instructions.

The water we are now using comes from a well 996 feet deep. 920 gallons of water per minute flow through a ten inch pipe.

UNSHADED AREA IS THE WORK AREA

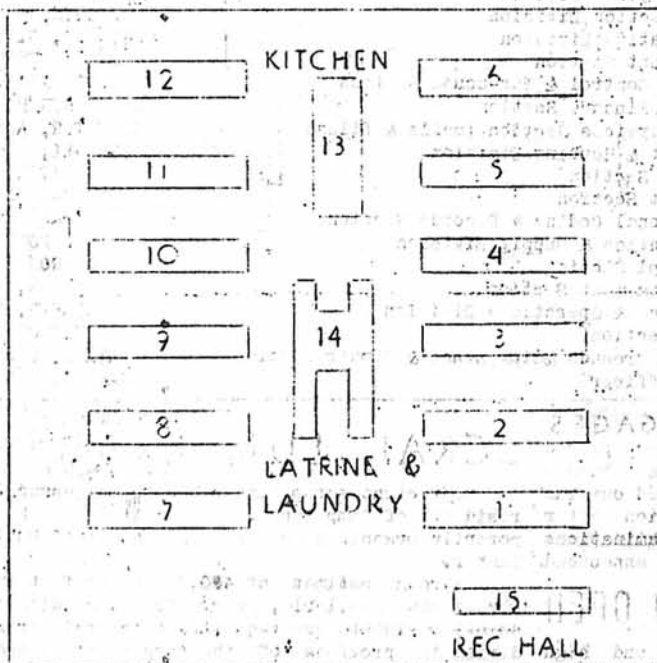
TOPAZ



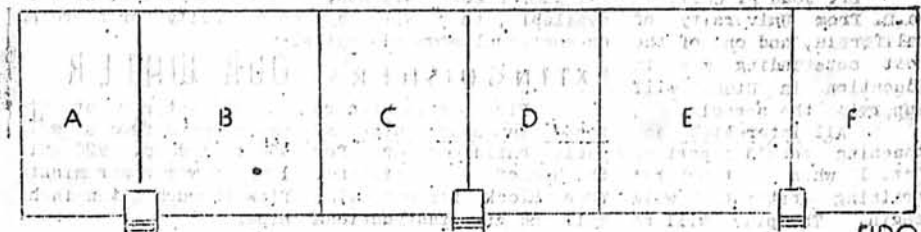
RELOCATION AREA

ADM. OFF.			HOSPITAL			M.P.
1	2	3	4	5	6	7
8	9	10	11	12	13	14
ELEM SCH	16	HIGH SCHOOL		19	20	ELEM SCH
22	23			25	27	28
29	30	31	32	33	34	35
36	37	38	39	40	41	42
RECREATION AREA						

CITY OF TOPAZ



BUILDING PLAN



CENTRAL UTAH RELOCATION PROJECT

FIDO